



P050: Wildlife Habitat Occupancy Models for Project and Landscape Evaluations in the Lake Tahoe Basin

Project Number	04.01.01.0082
Action Priority	Conduct Applied Scientific Research
Implementers	U.S. Forest Service - Pacific Southwest Research Station
Primary Contact	Pat Manley (pmanley@fs.fed.us)
Stage	Completed
Duration	2009 - 2012

Science Program > Conduct Applied Scientific Research

A myriad of sources of environmental change and associated land management challenges exist in the Lake Tahoe basin, as is the case for wildland forest ecosystems across the country. Sources of change are diverse, including land development, recreational uses, wildfire, insects, disease, forest management, and climate change. The Lake Tahoe Basin needs an assessment tool that can be applied to a variety of wildlife and biodiversity evaluation needs to help inform land management planning and implementation in light of multiple interacting change agents acting across the landscape and over time. A rich array of empirical data is available and can be tapped to provide this important tool.

No Key Photo provided for this Project

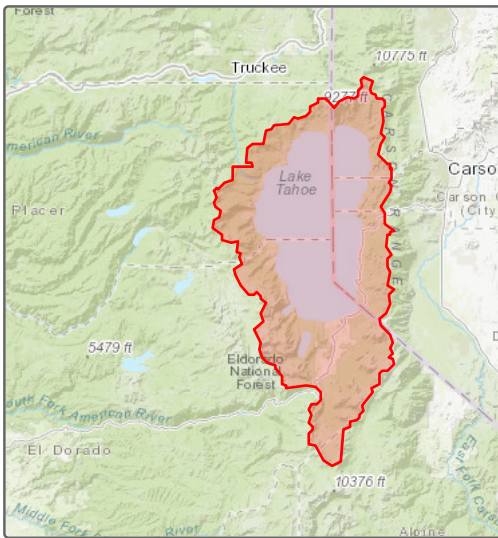
Key Accomplishments

Accomplishments to be provided upon completion of project

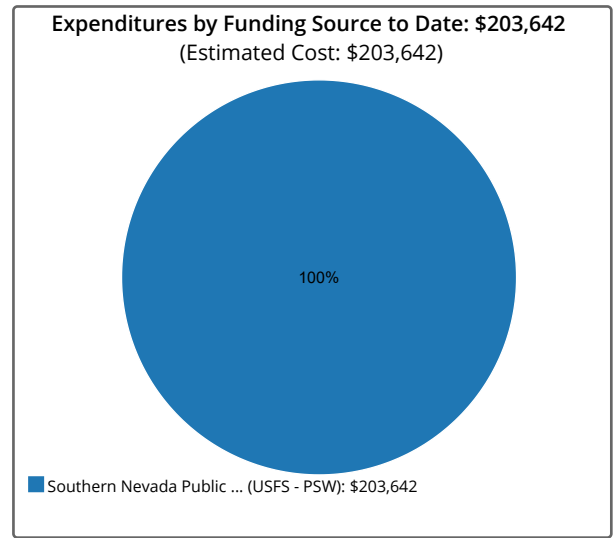
Threshold Categories

- Wildlife

Location



Expenditures



Photos

No additional photos provided

Project Fact Sheet Data as of 06/21/