



Ski Run "Mountain to Marina" Green Infrastructure Planning

Project Number	01.01.01.0192
Action Priority	Reduce Stormwater Pollution From: Roads and Highways, Forest Roads, Public and Privat Parcels
Implementers	Tahoe Regional Planning Agency
Primary Contact	Shay Navarro (snavarro@trpa.gov)
Stage	Planning/Design
Duration	2020 - 2023

Stormwater Management Program ▶ Reduce Stormwater Pollution From: Roads and Highways, Forest Roads, Public and Private Parcels

A green infrastructure approach to stormwater management protects, restores, and mimics the natural water cycle vs. building costly treatment BMPs. The project involves planning, analysis, outreach, and technical assistance within the greater Ski Run/ Bijou Park Creek watershed to accelerate the pace and scale of environmental improvement by reducing stormwater pollution from developed parcels, promoting regional treatment and public/private partnerships, and by identifying opportunities and constraints for small-scale, green infrastructure solutions that achieve multiple benefits. Work with the community and stakeholders will produce by-in for recommended strategies.

No Key Photo provided for this Project

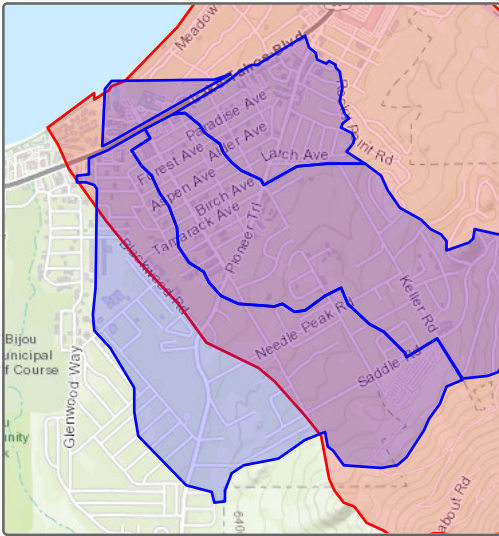
Key Accomplishments

Accomplishments to be provided upon completion of project

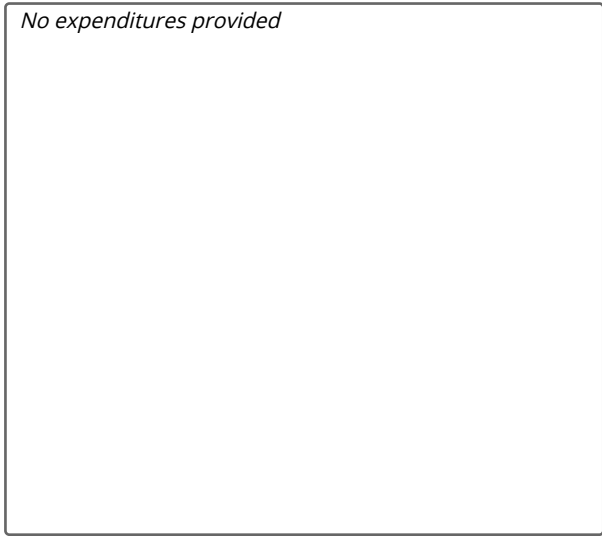
Threshold Categories

- Recreation
- Water Quality
- Soil Conservation
- Wildlife

Location



Expenditures

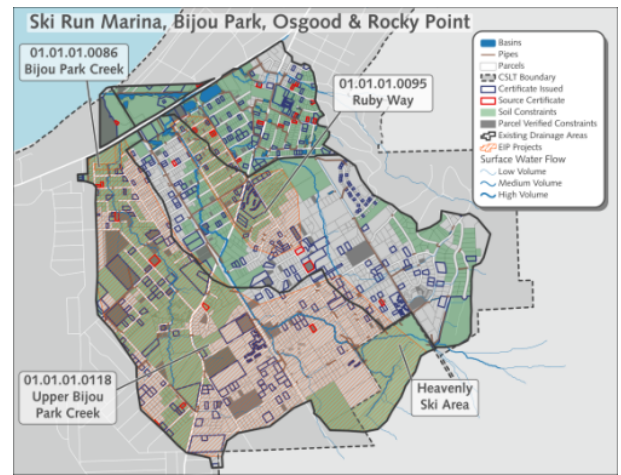


Photos

Before



Green storm water infrastructure planning aims to improve capacity of existing storm water basin



Existing Conditions Map

Project Fact Sheet Data as of 12/01/