



## Lake Tahoe Shoreline Plan Outreach

<b>Project Number</b>	04.02.01.0015		
<b>Action Priority</b>	Engage Communities in Environmental Stewardship		
<b>Implementers</b>	Tahoe Regional Planning Agency		
<b>Supporting Agencies</b>	California Tahoe Conservancy, Nevada Tahoe Resource Team – Nevada Division of State Lands		
<b>Primary Contact</b>	Kat McIntyre (KMcIntyre@trpa.gov)		
<b>Stage</b>	Completed	<b>Duration</b>	2017 - 2019
<b>Total Project Cost</b>	\$115,000	<b>Funding Request</b>	\$0

### Stewardship Program > Engage Communities in Environmental Stewardship

This project supported the on-going outreach and engagement elements of the shoreline planning process which were essential to ensuring broad support and the successful implementation of new shoreline policies for the Tahoe Basin. These outreach elements included holding public meetings, direct mailing postcards and brochures, and implementing other shoreline mediation and outreach program elements.

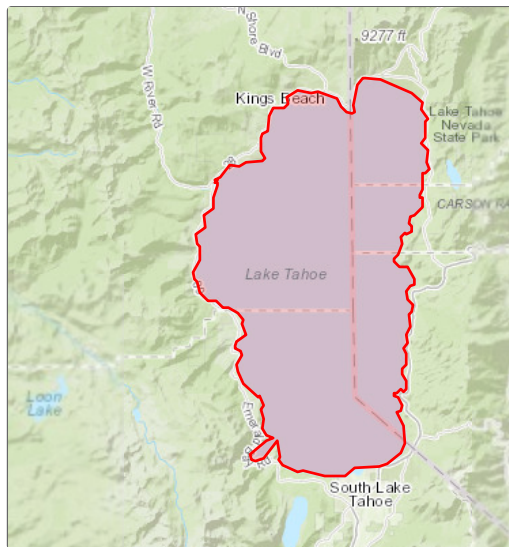
#### Targeted Performance Measures

- People Served

#### Threshold Categories

- Recreation

#### Location



Shoreline Public Workshop

#### Targeted Funding

- Secured Funding: California Tahoe Conservancy (CTC), \$75,000
- Secured Funding: Lake Tahoe License Plate Prog... (NDSL), \$40,000

## Photos

*No additional photos provided*

---

Project Fact Sheet Data as of 05/21/2024