



Evaluation of Montane Forest Genetic Resources in the Lake Tahoe Basin

Project Number	04.01.01.0144		
Action Priority	Conduct Applied Scientific Research		
Implementers	UC Davis Tahoe Environmental Research Center		
Supporting Agencies	Nevada Tahoe Resource Team – Nevada Division of State Lands, UC Davis Tahoe Environmental Research Center		
Primary Contact	Patricia Maloney (pemaloney@ucdavis.edu)		
Stage	Completed	Duration	2009 - 2013
Total Project Cost	\$95,892	Funding Request	\$0

Science Program > Conduct Applied Scientific Research

Projects determines the patterns of adaptive genetic variation across the Lake Tahoe Basin for genes controlling ecologically important plant traits by genotyping individual adult sugar pines, and also determining the underlying genes that control adaptive phenotypic plasticity of sugar pine individuals for water-use efficiency, disease resistance, phenology, and growth.

No Key Photo provided for this Project

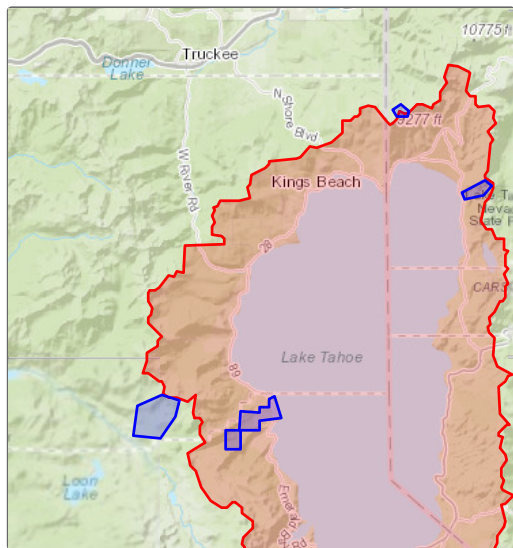
Targeted Performance Measures

No Expected Accomplishments provided

Threshold Categories

- Vegetation Preservation

Location



Targeted Funding

- Secured Funding: Lake Tahoe License Plate Prog... (NDSL), \$38,000
- Secured Funding: UC Davis Tahoe Environmental ... (TERC), \$57,892

Photos

No additional photos provided

Project Fact Sheet Data as of 05/19/2024