



Avian Impacts of White Satin Moth Defoliation in Tahoe Aspen

Project Number	04.01.01.0134		
Action Priority	Conduct Applied Scientific Research		
Implementers	Nevada Tahoe Resource Team – Nevada Department of Wildlife		
Supporting Agencies	Nevada Tahoe Resource Team – Nevada Division of State Lands		
Primary Contact	Mark Enders (menders@ndow.org)		
Stage	Implementation	Duration	2018 - 2024
Total Project Cost	\$76,580	Funding Request	\$0

Science Program > Conduct Applied Scientific Research

This is a three-year study on the effects of white satin moth infestations on bird communities at Lake Tahoe. This invasive moth species has caused significant aspen defoliation and mortality in Lake Tahoe Nevada State Park since the early 2010s, and this project will be the first to document impacts to bird communities that rely on aspen habitats at Lake Tahoe. Point-count bird surveys and nest monitoring will be conducted during the breeding season, and aspen habitat assessments will be conducted each year in order to quantify whether major structural changes in aspen communities caused by white satin moths have any effects on bird abundance, diversity, and nesting success.

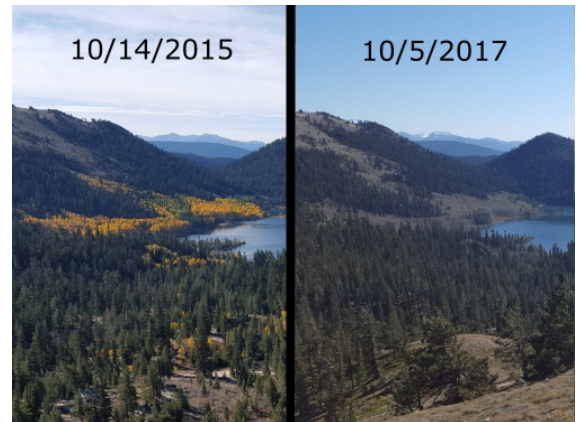
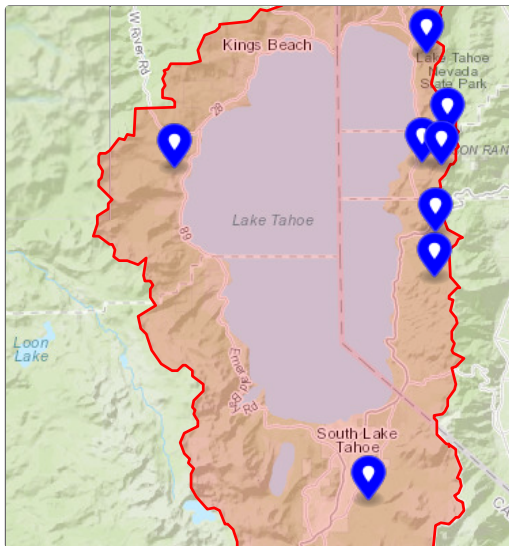
Targeted Performance Measures

- Acres of Habitat Restored or Enhanced
- Acres of Invasive Species Inventoried
- New Invasive Species Locations Detected

Threshold Categories

- Wildlife

Location



Photos of aspen at Marlette Lake taken before and after white satin moths became established.

Targeted Funding

<p>■ Secured Funding: Tahoe Bonds Act (NDSL), \$76,580</p>
--

Photos

Before



Images of aspen defoliation and white satin moth caterpillars and cocoons, taken in North Canyon in July 2017.

During



Completely exposed warbling vireo nest.



Leaf cover retained around warbling vireo nest.

Project Fact Sheet Data as of 11/15/2024