



Droughts Effects in Mountain Ecosystems

Project Number	04.01.01.0133		
Action Priority	Conduct Applied Scientific Research		
Implementers	University of Nevada, Reno		
Supporting Agencies	Unknown		
Primary Contact	Kat McIntyre (KMcIntyre@trpa.gov)		
Stage	Completed	Duration	2016 - 2017
Total Project Cost	\$48,720	Funding Request	Unknown

Science Program > Conduct Applied Scientific Research

The 2012-2015 drought was an exceptional period of warm and dry weather that impacted water and ecological resources in the Lake Tahoe Basin (LTB). Although above average temperature and below average precipitation occurred in all four years, the patterns varied across years and in different parts of the LTB. Water year (WY) 2012 and 2015 were the most exceptional in terms of below average precipitation (30 and 36% below the long term average, respectively). In general the southern end and higher elevations of the LTB experienced the warmest drought. Overall Palmer Drought Severity Index (PDSI) was less severe than during 1987-1990 drought.

No Key Photo provided for this Project

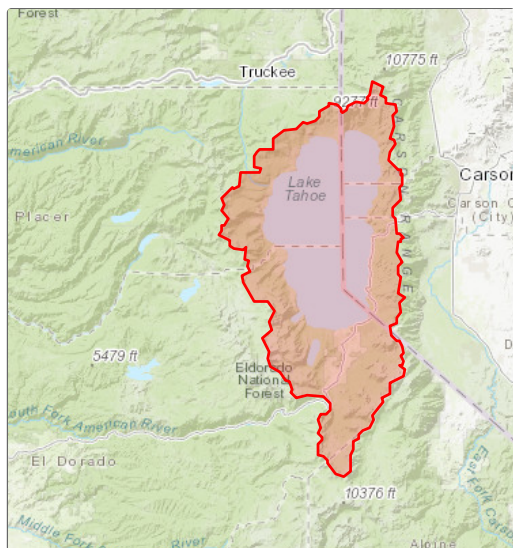
Targeted Performance Measures

No Expected Accomplishments provided

Threshold Categories

- Vegetation Preservation
- Water Quality

Location



Targeted Funding



Photos

No additional photos provided

Project Fact Sheet Data as of 05/16/2024