



Nearshore Linkages Assessment

Project Number	04.01.01.0131	Duration	2021 - 2030
Action Priority	Conduct Applied Scientific Research	Funding Request	\$500,000
Implementers	Tahoe Science Advisory Council, Tahoe Regional Planning Agency		
Supporting Agencies	California Lahontan Regional Water Quality Control Board		
Primary Contact	Robert Larsen (robert.larsen@resources.ca.gov)		
Stage	Planning/Design		
Total Project Cost	\$1,000,000		

Science Program > Conduct Applied Scientific Research

A multidisciplinary assessment of the relationship of nearshore water quality from the terrestrial to the deep lake environments, and the effectiveness of management strategies to achieve nearshore water quality goals. Program elements may include: 1) Exploration of fish population dynamics, including drivers of native fish population decline 2) Remote sensing to monitor nearshore components (eg: algae, AIS, clarity) 3) Investigate the link between Asian clams and metaphtyon, and management response through removal projects 4) Evaluation of methods to prevent/control the spread of AIS. 5) Water quality monitoring associated with boating 6) Nutrient source analysis

Targeted Performance Measures

- Acres of Invasive Species Inventoried

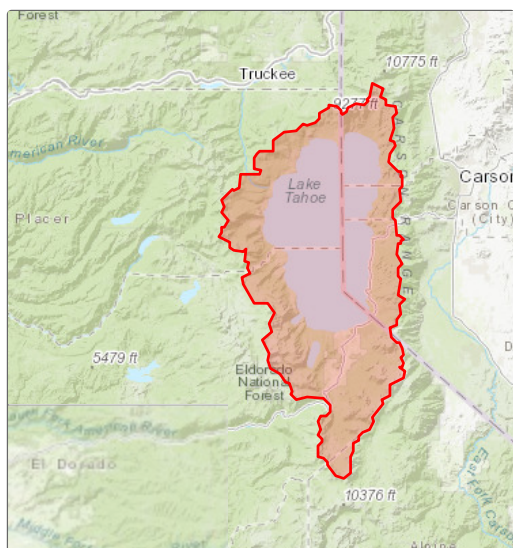
Threshold Categories

- Fisheries
- Water Quality



Paddle boarders enjoying beautiful nearshore clarity

Location



Targeted Funding

- Secured Funding: SB630 Funds (Lahontan), \$15,000
- Targeted Funding: Lake Tahoe Restoratio... (USFS - LTBMU), \$500,000
- No Funding Source Identified

Photos

No additional photos provided

Project Fact Sheet Data as of 06/06/2025