



P074: Tools to Quantify Urban Stormwater Load Reduction From SEZ Restoration Actions

Project Number 04.01.01.0113
Action Priority Conduct Applied Scientific Research
Implementers 2nd Nature, LLC
Supporting Agencies U.S. Forest Service - Pacific Southwest Research Station
Primary Contact Maggie Mathias (maggie@2ndnaturellc.com)

Stage Completed
Duration 2007 - 2013
Total Project Cost \$153,366
Funding Request \$0

Science Program > Conduct Applied Scientific Research

This report and associated digital Stream Load Reduction Tool (SLRTv1) calculation templates are the final products for two complementary research efforts funded by the USDA Forest Service Pacific Southwest Research Station using funds from SNPLMA research grants. The combined research goals were to obtain and leverage SEZ specific data to develop a methodology that estimates the average annual pollutant load reduction associated with SEZ restoration efforts. SEZ restoration efforts that include functional geomorphic improvements have, and continue to be, conducted in the Tahoe Basin with a common goal and assumption that they provide a long-term downstream water quality benefit.

No Key Photo provided for this Project

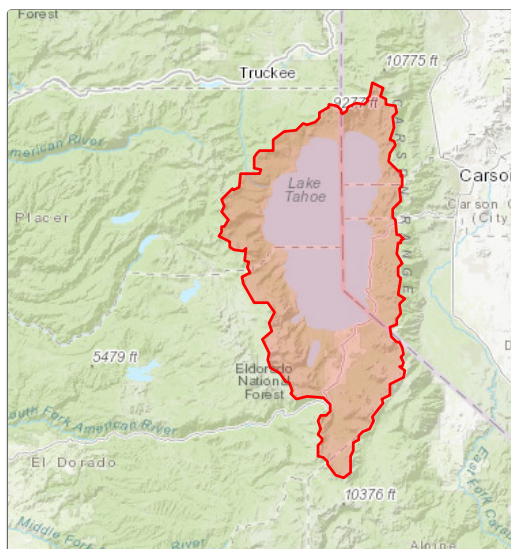
Targeted Performance Measures

No Expected Accomplishments provided

Threshold Categories

- Water Quality

Location



Targeted Funding

■ Secured Funding: Southern Nevada Public ... (USFS - PSW), \$153,366

Photos

No additional photos provided

Project Fact Sheet Data as of 05/12/2024