



P090: Understanding the Decline of Deepwater Sensitive Species in Lake Tahoe: Eutrophication vs. Species Invasion

Project Number	04.01.01.0088		
Action Priority	Conduct Applied Scientific Research		
Implementers	University of Nevada, Reno		
Supporting Agencies	U.S. Forest Service - Pacific Southwest Research Station		
Primary Contact	Kat McIntyre (KMcIntyre@trpa.gov)		
Stage	Completed	Duration	2011 - 2014
Total Project Cost	\$293,872	Funding Request	\$0

Science Program ➤ Conduct Applied Scientific Research

To determine mechanisms that have contributed to the decline of these unique deepwater plant and invertebrate communities and develop appropriate restoration strategies. A monitoring plan will be developed to allow managers to track special status community response to restoration strategies, such as changes in light penetration and/or reductions in non-native species. Monitoring of relatively long-lived organisms such as aquatic plants and invertebrates provides an important biological indicator of the overall health of the system, one that has received little attention in Lake Tahoe.

No Key Photo provided for this Project

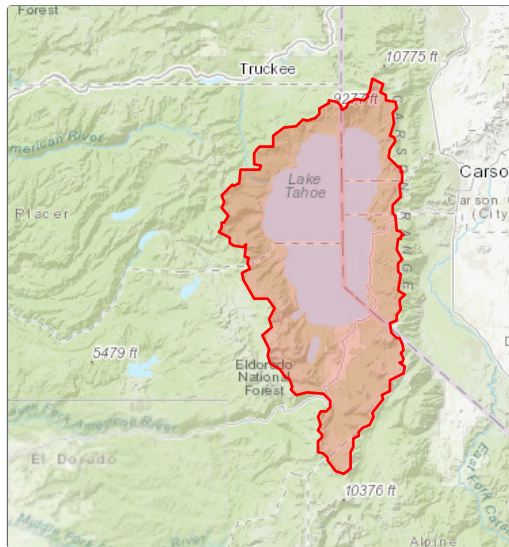
Targeted Performance Measures

No Expected Accomplishments provided

Threshold Categories

- Vegetation Preservation

Location



Targeted Funding

■ Secured Funding: Southern Nevada Public ... (USFS - PSW), \$293,872

Photos

No additional photos provided

Project Fact Sheet Data as of 07/06/2025