



Sierra Blvd-Palmira Avenue to South Tahoe Bikeway Connector

Project Number	03.02.02.0094
Action Priority	Build and Enhance Trail Networks
Implementers	City of South Lake Tahoe
Supporting Agencies	City of South Lake Tahoe
Primary Contact	Stephen Anderjack (sanderjack@cityofslt.us)

Stage	Planning/Design	Duration	2022 - 2027
Total Project Cost	\$1,370,000	Funding Request	\$1,411,950

Transportation Program > Build and Enhance Trail Networks

Project will construct approximately .134 miles of Class 1 Mixed Use Recreational Trail extending from Palmira Avenue on Sierra Blvd to U.S. Highway 50 (LTB) and from Lake Tahoe Blvd to the South Tahoe Bikeway located near Silver Dollar Avenue. The proposed Class 1 bike trail connector will link the South Tahoe Bikeway with the Sierra Blvd Class 1 bike trail.

No Key Photo provided for this Project

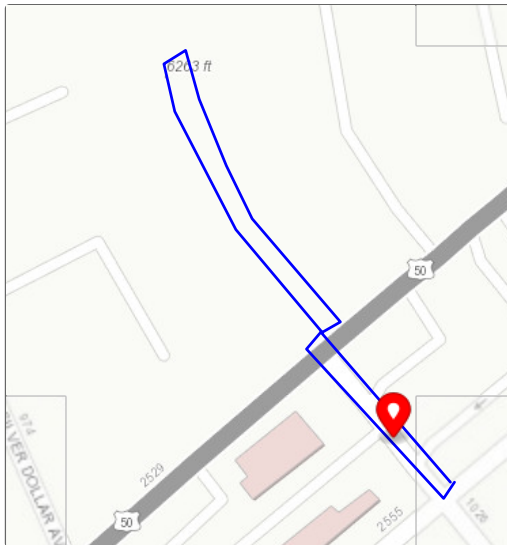
Targeted Performance Measures

- Miles of Pedestrian and Bicycle Routes Improved or Constructed

Threshold Categories

- Air Quality
- Noise
- Recreation

Location



Targeted Funding

- Secured Funding: El Dorado County Recreation B... (CSLT), \$56,684
- Targeted Funding: City of South Lake Tahoe Gene... (CSLT), \$161,950
- Targeted Funding: Congestion Mitigation and Air... (FHWA), \$1,250,000

Photos

No additional photos provided

Project Fact Sheet Data as of 06/06/2025