



## Mobility Hub and Transit Center Capital

<b>Project Number</b>	03.02.01.0043	<b>Duration</b>	2018 - 2045
<b>Action Priority</b>	Build and Enhance Transit Systems	<b>Funding Request</b>	Unknown
<b>Implementers</b>	Tahoe Regional Planning Agency		
<b>Supporting Agencies</b>	Unknown		
<b>Primary Contact</b>	Michelle Glickert (mglickert@trpa.gov)		
<b>Stage</b>	Planning/Design		
<b>Total Project Cost</b>	\$25,045,000		

### Transportation Program > Build and Enhance Transit Systems

*No Key Photo provided for this Project*

Mobility hubs are places of connectivity where different modes of transportation – from walking to rapid transit – come together seamlessly and where there is an intensive concentration of working, living, shopping and/or playing. This project would include the construction of 17 mobility hubs or transit centers in various locations around and near the region. The Tahoe Mobility Hub, in Incline Village - Washoe County project lives under EIP project 03.02.01.0021 and the LTCC mobility hub is complete.

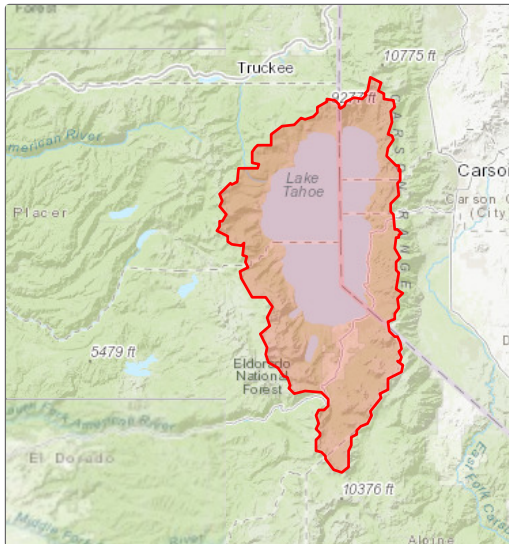
### Targeted Performance Measures

- Pounds of Air Pollutants Removed or Avoided by Project

### Threshold Categories

- Air Quality

### Location



### Targeted Funding



## Photos

*No additional photos provided*

---

Project Fact Sheet Data as of 05/19/2024