



Basin Wide Transit Operations

Project Number	03.02.01.0014
Action Priority	Build and Enhance Transit Systems
Implementers	U.S. Forest Service - Lake Tahoe Basin Management Unit
Supporting Agencies	Unknown or unspecified
Primary Contact	Brian Garrett (brian.garrett@usda.gov)

Stage	Completed	Duration	2010 - 2014
Total Project Cost	\$600,000	Funding Request	\$0

Transportation Program > Build and Enhance Transit Systems

The Basin Wide Transportation project has provided funding for the West Shore Transit system and continuous implementation of a seasonal service on Lake Tahoe's scenic east shore focused along State Route 28 between Spooner Summit and Incline Village to alleviate roadside parking, congestion, and vehicle miles traveled which is contributing to erosion, air quality impacts and pedestrian, bicycle, and automobile conflicts.

No Key Photo provided for this Project

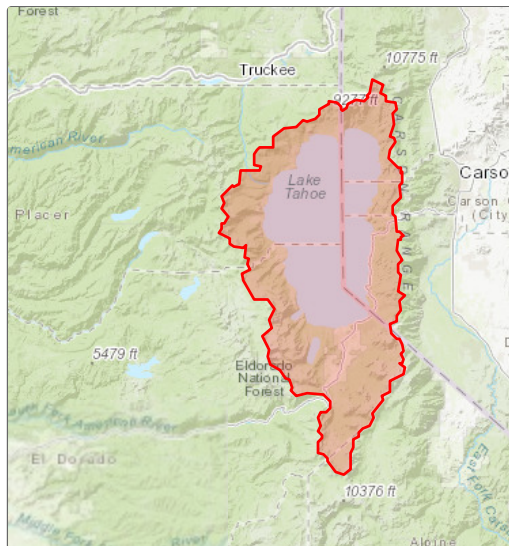
Targeted Performance Measures

No Expected Accomplishments provided

Threshold Categories

- Air Quality
- Water Quality

Location



Targeted Funding

■ Secured Funding: Unknown or Unassigned, \$600,000

Photos

No additional photos provided

Project Fact Sheet Data as of 05/19/2024