

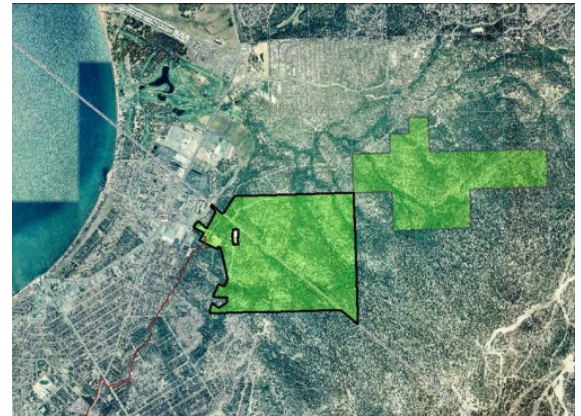


Van Sickle Bi-State Park Phase 3

Project Number	03.01.02.0123		
Action Priority	Improve Public Recreation Facilities		
Implementers	Nevada Tahoe Resource Team – Nevada Division of State Parks		
Supporting Agencies	Nevada Tahoe Resource Team – Nevada Division of State Lands		
Primary Contact	Cassandra Hughes (c.hughes@parks.nv.gov)		
Stage	Planning/Design	Duration	2022 - 2026
Total Project Cost	\$20,000,000	Funding Request	\$6,050,000

Sustainable Recreation Program > Improve Public Recreation Facilities

Van Sickle Phase 3 is an improvement to the Van Sickle Bi-State Park Phase 1. Nevada State Parks has hired a contractor to design a visitor center, improved parking, and restrooms. The visitor center will include park offices, a gift shop, and interpretive spaces. A multi-use paved path is being planned from the visitor to the center to the state border. The planning team is coordinating occurring with California Tahoe Conservancy to continue the path to Lakeview Parkway. An improved monument is being planned for the Nevada/California Stateline that will include additional interpretive opportunities. Construction is tentatively planned for the summer of 2025.



Van Sickle Bi-State Park - lower developed area

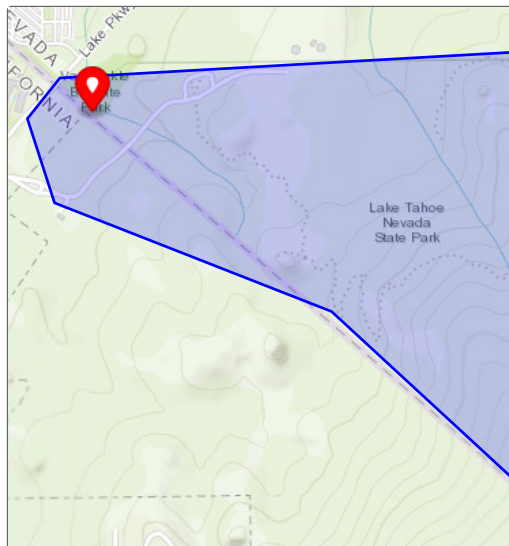
Targeted Performance Measures

- Facilities Improved or Created

Threshold Categories

- Recreation

Location

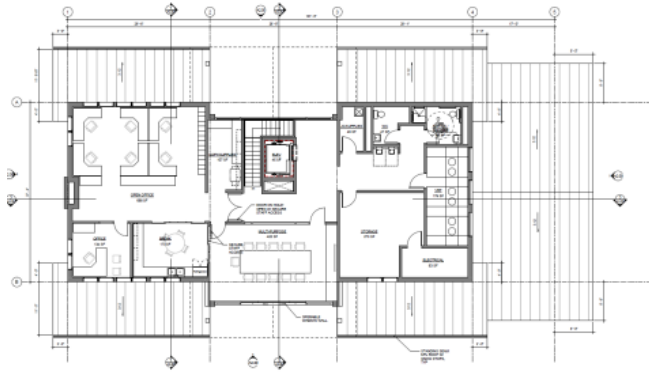


Targeted Funding

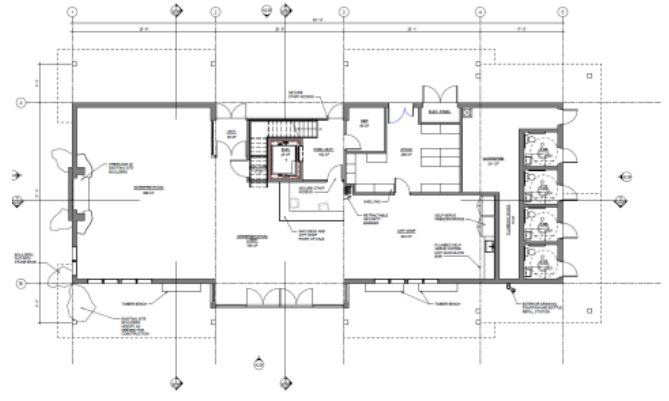
■ Secured Funding: Tahoe Bonds Act (NDSL), \$950,000
■ Targeted Funding: Land and Water Conservation Fu... (NPS), \$1,362,500
■ Targeted Funding: Tahoe Bonds Act (NDSL), \$4,687,500
■ No Funding Source Identified

Photos

Before

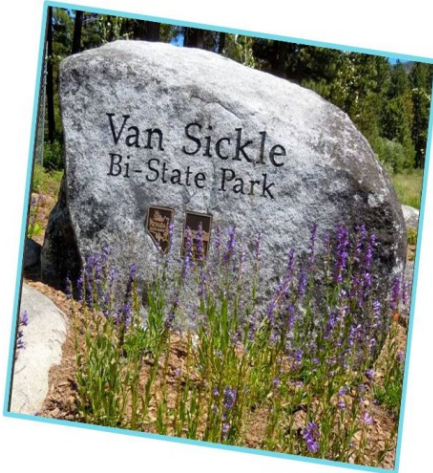


2nd Floor 30% Design



1st Floor 30% Design

During



Van Sickle Entry in CA