

## Forest Health and White Bark Pine Mapping and Condition Assessment

<b>Project Number</b>	02.02.01.0029		
<b>Action Priority</b>	Restore Native Vegetation and Forest Communities		
<b>Implementers</b>	Tahoe Regional Planning Agency		
<b>Supporting Agencies</b>	Unknown		
<b>Primary Contact</b>	Kat McIntyre (KMcIntyre@trpa.gov)		
<b>Stage</b>	Planning/Design	<b>Duration</b>	2026 - 2027
<b>Total Project Cost</b>	\$250,000	<b>Funding Request</b>	Unknown

### Forest Restoration Program > Restore Native Vegetation and Forest Communities

The purpose of this project is to improve the understanding of extent and health of occupied whitebark pine stands within the Lake Tahoe Basin to support habitat conservation and recovery plans. Existing habitat maps are sufficient for identifying coarse localities where whitebark pine dominated stands occur, but extent of dominant, co-dominant, and mixed stands is lacking. Ground based mapping is limited in whitebark pine stands due to steep and rugged terrain that is difficult or infeasible to traverse on foot. Recent research has demonstrated use of unmanned aerial vehicles to map whitebark pine presence and mortality. The objective of this project is to produce spatial products.

*No Key Photo provided for this Project*

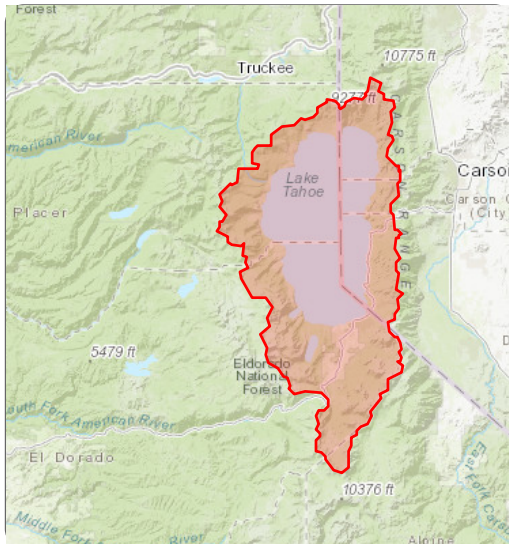
#### Targeted Performance Measures

- Acres of Habitat Protected
- Special Status Species Sites Protected or Re-Established

#### Threshold Categories

- Vegetation Preservation

#### Location



#### Targeted Funding

No Funding Source Identified

## Photos

*No additional photos provided*

---

Project Fact Sheet Data as of 02/16/2026