



Lake Tahoe Basin Whitebark Pine Cone Collection

Project Number	02.02.01.0028		
Action Priority	Restore Native Vegetation and Forest Communities		
Implementers	U.S. Forest Service - Lake Tahoe Basin Management Unit		
Supporting Agencies	Unknown		
Primary Contact	Emma Williams (emma.williams@usda.gov)		
Stage	Planning/Design	Duration	2024 - 2030
Total Project Cost	\$200,000	Funding Request	Unknown

Forest Restoration Program > Restore Native Vegetation and Forest Communities

Whitebark pine (*Pinus albicaulis*) is a federally threatened conifer that grows in mixed conifer and subalpine forests across western North America. It provides high value wildlife habitat, modulates spring runoff, and stabilizes slopes. Threats include climate change, wildfire, mountain pine beetle outbreaks, and white pine blister rust. Collection of cones from apparent blister rust resistance trees is needed to screen for blister rust resistance and identify future operational cone collection trees. This project would involve cone production surveys, cone caging, and cone collection. Cones would subsequently be sent to USFS Nursery Facility to conduct white pine blister rust screening.

No Key Photo provided for this Project

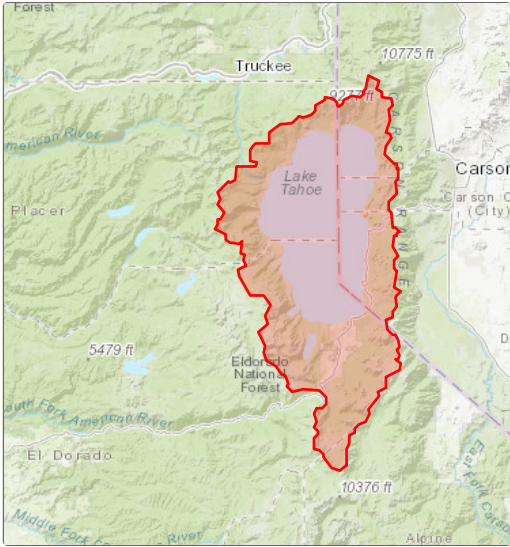
Targeted Performance Measures

- Special Status Species Sites Protected or Re-Established

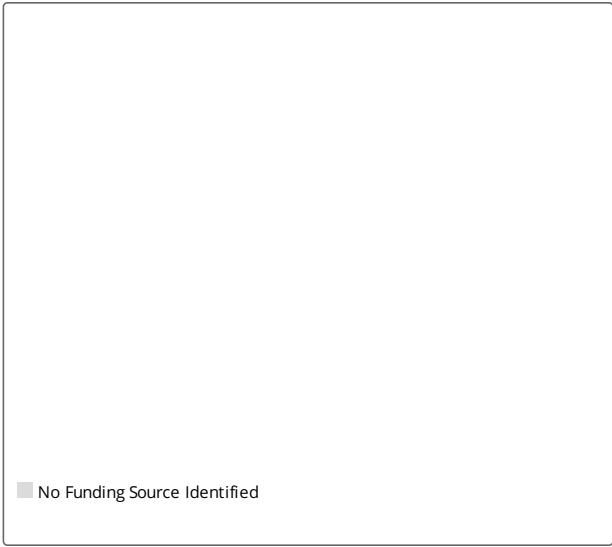
Threshold Categories

- Vegetation Preservation
- Wildlife
- Water Quality

Location



Targeted Funding



Photos

No additional photos provided

Project Fact Sheet Data as of 01/15/2025