



Sugar Pine Restoration in the Lake Tahoe Basin

Project Number	02.02.01.0008		
Action Priority	Restore Native Vegetation and Forest Communities		
Implementers	Sugar Pine Foundation, Tahoe Regional Planning Agency, U.S. Forest Service - Lake Tahoe Basin Management Unit		
Supporting Agencies	California Tahoe Conservancy, Nevada Tahoe Resource Team – Nevada Division of State Parks, Sugar Pine Foundation, Tahoe Fund, U.S. Forest Service - Lake Tahoe Basin Management Unit		
Primary Contact	Maria Mircheva (maria@sugarpinefoundation.org)		
Stage	Implementation	Duration	2005 - 2030
Total Project Cost	\$1,200,000	Funding Request	\$301,695

Forest Restoration Program > Restore Native Vegetation and Forest Communities

This project aims to restore sugar pines in key locations in the Lake Tahoe Basin. Sugar pines are native trees plagued by a non-native invasive fungus called blister rust and their numbers have decreased dramatically. Volunteers and field crews plant sugar pine seedlings progeny of blister rust resistant trees in order to restore their numbers closer to historical forest composition.



Girl holding a Sugar Pine seedling

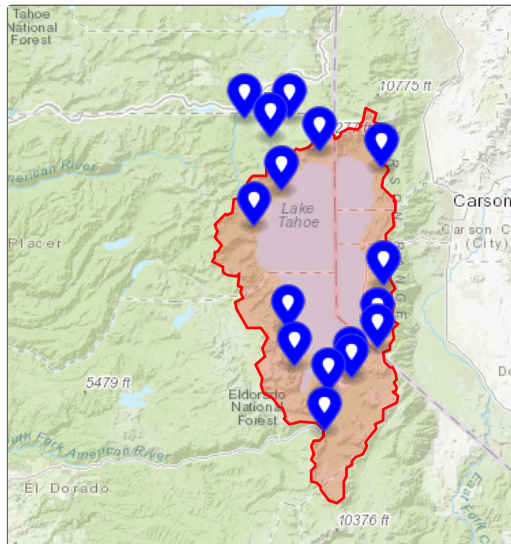
Targeted Performance Measures

No Expected Accomplishments provided

Threshold Categories

- Vegetation Preservation

Location



Targeted Funding

■	Secured Funding: California Tahoe Conservancy (CTC), \$10,000
■	Secured Funding: Nevada State Parks (NV State Parks), \$2,600
■	Secured Funding: Sugar Pine Foundation (SPF), \$640,920
■	Secured Funding: Tahoe Fund (Tahoe Fund), \$16,000
■	Secured Funding: U.S. Forest Service (USFS - LTBMU), \$3,500
■	Targeted Funding: Sugar Pine Foundation (SPF), \$301,695
■	No Funding Source Identified

Photos

Before



Blister Rust Infection

During



Planting seedlings



Volunteer Planting

After



Seedling Growth