



Non-motorized aquatic invasive species cleaning stations

Project Number 01.03.01.0038
Action Priority Prevent, Control, or Eradicate Aquatic Invasive Species
Implementers Tahoe Regional Planning Agency
Supporting Agencies League to Save Lake Tahoe, U.S. Fish and Wildlife Service
Primary Contact Dennis Zabaglo (dzabaglo@trpa.gov)

Stage Implementation **Duration** 2023 - 2034
Total Project Cost \$100,000 **Funding Request** \$0

Aquatic Invasive Species Program > Prevent, Control, or Eradicate Aquatic Invasive Species

Clean, drain, and dry is the AIS Program mantra that guides recreators on what they can do to help prevent the introductions of AIS. To enhance non-motorized watercraft becoming clean, drain, and dry, cleaning stations are being sought to be placed at strategic locations to protect waters of the Region. Equipment developed by CD3, allows for recreators to reduce risk of introduction by providing tools to remove AIS and/or water, and a receptacle for storing any material removed from the non-motorized vessel. Two units have been acquired through the League to Save Lake Tahoe and BIL. One rotates locations, the other is stationed at Meeks Resort in partnership with the Washoe Tribe.

Targeted Performance Measures

- Watercraft Clean Launches

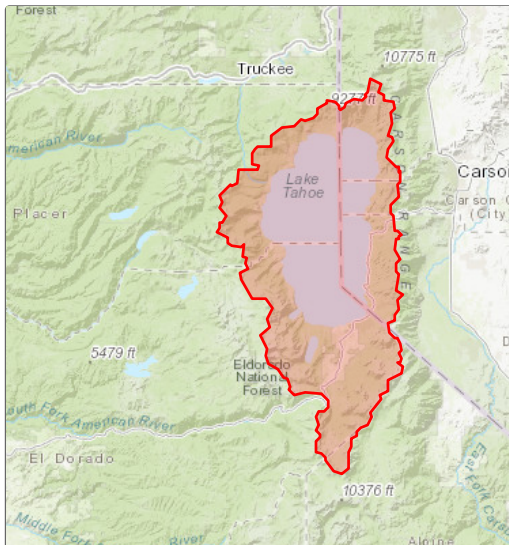
Threshold Categories

- Fisheries
- Recreation
- Water Quality



Mobile wash station for non-motorized watercraft

Location



Targeted Funding

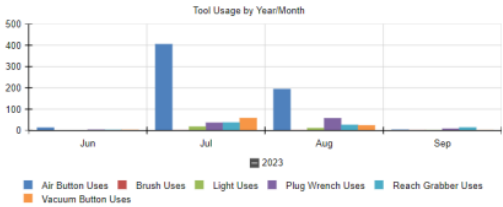
- Secured Funding: Bipartisan Infrastructure La... (USFWS), \$50,000
- Secured Funding: League to Save Lake Tahoe (League), \$50,000

Photos

After

Tools									
Location	Month	Air Button Uses	Brush Uses	Light Uses	Plug Wrench Uses	Reach Grabber Uses	Vacuum Button Uses	Total	Percentage
Tahoe Trailer	Jun	13	0	0	3	2	2	20	2 %
	Jul	405	1	18	36	37	58	555	61 %
	Aug	194	1	11	57	26	24	313	34 %
	Sep	3	1	1	8	14	1	28	3 %
	Total	615	3	30	104	79	85	916	
	Percentage	67 %	0 %	3 %	11 %	9 %	9 %		
Total		615	3	30	104	79	85	916	

Sessions					
Location	2023				
	Jun	Jul	Aug	Sep	
Tahoe Trailer	12	322	170	5	509
Total	12	322	170	5	509
Percentage	2 %	63 %	33 %	1 %	



CD3 Use data tables, 2024