



Lake-wide Surveillance and Site Assessments

Project Number	01.03.01.0037		
Action Priority	Prevent, Control, or Eradicate Aquatic Invasive Species		
Implementers	Tahoe Resource Conservation District		
Supporting Agencies	California Tahoe Conservancy, Tahoe Regional Planning Agency		
Primary Contact	Mollie Hurt (mhurt@tahoercd.org)		
Stage	Implementation	Duration	2022 - 2033
Total Project Cost	\$1,500,000	Funding Request	\$0

Aquatic Invasive Species Program > Prevent, Control, or Eradicate Aquatic Invasive Species

This project captures the effort to maintain the weed-free status of previously treated Aquatic Invasive Plant (AIP) Control sites that meet the criteria of Surveillance or Long-term monitoring, as well as the effort to maintain up-to-date mapping and data on known AIP Control sites. The proclivity of Eurasian watermilfoil and curly-leaf pondweed to spread through fragmentation indicates that fully treated AIP Control sites are at risk of reinfestation as long as there is a source of fragments in the lake-wide system. Surveillance and Site Assessments are an integral action to meeting the goals of the AIS Action Agenda and EIP Threshold Standards.

Targeted Performance Measures

No Expected Accomplishments provided

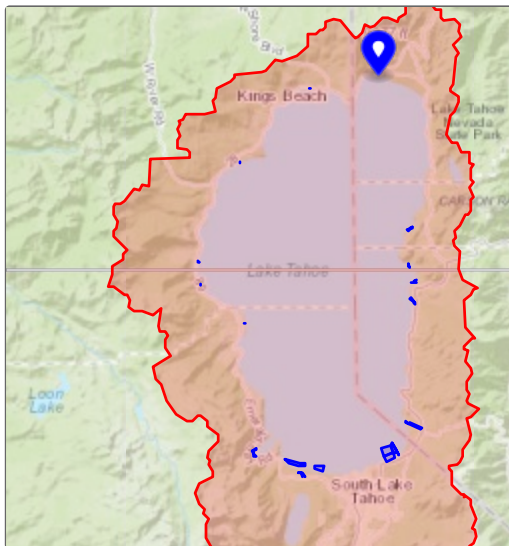
Threshold Categories

- Fisheries
- Water Quality



Diver detection of Eurasian watermilfoil plant during surveillance monitoring, Crystal Shores, Incline Village, NV, July 2023.

Location



Targeted Funding

- Secured Funding: Lake Tahoe Restoration Act (TRPA), \$841,056
- Secured Funding: SB630 Funds (CTC), \$250,000
- No Funding Source Identified

Photos

During



Successful diver hand-removal of Eurasian watermilfoil plant and root system, Crystal Shores, Incline Village, NV, July 2023.



Diver using hand-removal to carefully collect and remove Eurasian watermilfoil plant and root system, Crystal Shores, Incline Village, NV, July 2023.



Rooted Eurasian watermilfoil prior to hand-removal, Elk Point Rock Cribs near Zephyr Point, Nevada, June 2023.