



Emerald Bay State Park Aquatic Invasive Plant Surveillance and Response

Project Number 01.03.01.0025
Action Priority Prevent, Control, or Eradicate Aquatic Invasive Species
Implementers California Department of Parks and Recreation
Supporting Agencies California Department of Parks and Recreation
Primary Contact Rich Adams (rich.adams@parks.ca.gov)

Stage Implementation
Duration 2014 - ongoing
Total Project Cost \$102,000
Funding Request \$0

Aquatic Invasive Species Program ➤ Prevent, Control, or Eradicate Aquatic Invasive Species

Annual monitoring is performed by contract scuba divers and the CA State Parks Dive Team to detect and remove any invasive aquatic weeds in Emerald Bay. Emerald Bay was infested with Eurasian watermilfoil and curly-leaf pondweed starting in 2007 and after implementing a removal project that was completed in 2015, this monitoring program was designed and implemented to continue the effort to keep invasive species from establishing in the bay. There is no completion date for this project. It will continue indefinitely. See project 01.03.01.0041 - Emerald Bay Aquatic Invasive Plant Control for most recent information.

Targeted Performance Measures

- Acres Treated for Invasive Species

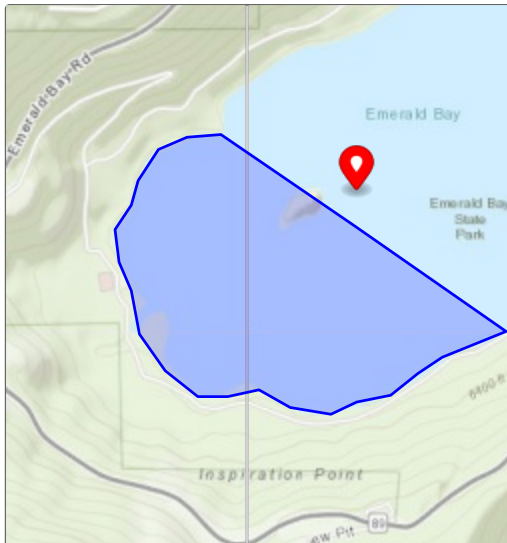
Threshold Categories

- Vegetation Preservation
- Water Quality



Before After comparison

Location



Targeted Funding

Secured Funding: California Department of Park... (CDPR), \$102,000

Photos

During



Divers monitoring and removing invasive species in Emerald Bay in 2023



MTS consultants and State Parks dive team remove aquatic invasive plants from Emerald Bay in 2023



In 2024 California State Parks broadcasted a Live Dive program that highlighted techniques used by their dive team to survey and remove AIS and how they monitor changes in AIS populations over time.