



Ski Run Marina Aquatic Invasive Plant Control

Project Number	01.03.01.0014		
Action Priority	Prevent, Control, or Eradicate Aquatic Invasive Species		
Implementers	Tahoe Regional Planning Agency, Tahoe Resource Conservation District		
Supporting Agencies	California Tahoe Conservancy, Tahoe Fund, U.S. Fish and Wildlife Service		
Primary Contact	Dennis Zabaglo (dzabaglo@trpa.gov)		
Stage	Planning/Design	Duration	2015 - 2028
Total Project Cost	\$1,100,000	Funding Request	\$800,000

Aquatic Invasive Species Program ➤ Prevent, Control, or Eradicate Aquatic Invasive Species

Conditions in the Marina indicate that an integrated management plan is needed at this site. Preliminary data from the Ski Run Marina AIS Plant Control Project- Laminar Flow Aeration (01.03.01.0026) indicates that this may be a useful tool for reducing aquatic invasive plants. Aquatic invasive plant control planning will pursue the use of integrated methods to address the infestation in the Marina and in Ski Run Channel (01.03.01.0013).

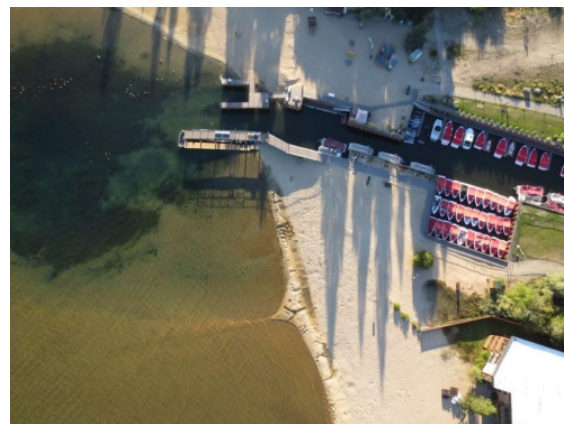
Targeted Performance Measures

- Acres of Habitat Restored or Enhanced
- Acres of Invasive Species Inventoried
- Acres Treated for Invasive Species

Threshold Categories

- Fisheries
- Water Quality

Location



Aerial view of Ski Run Marina at entrance of Ski Run Channel, July 2016

Targeted Funding

Secured Funding: California Tahoe Conservancy (CTC), \$15,000
Secured Funding: Lake Tahoe Restoration Act (USFWS), \$278,250
Secured Funding: Tahoe Fund (Tahoe Fund), \$3,400
Targeted Funding: Lake Tahoe Restoration Act (USFWS), \$800,000
No Funding Source Identified

Photos

Before



Ski Run Marina facing Lake Tahoe, February 2015



View of Ski Run Marina facing shore (Riva Grill), February 2015

Project Fact Sheet Data as of 05/17/2024