

## Aquatic Organism Passage Assessment

<b>Project Number</b>	01.02.01.0113		
<b>Action Priority</b>	Restore Priority Meadows, Wetlands, and Lake Tahoe Tributaries		
<b>Implementers</b>	U.S. Forest Service - Lake Tahoe Basin Management Unit		
<b>Supporting Agencies</b>	Unknown		
<b>Primary Contact</b>	Sarah Muskopf (sarah.muskopf@usda.gov)		
<b>Stage</b>	Planning/Design	<b>Duration</b>	2026 - 2030
<b>Total Project Cost</b>	\$200,000	<b>Funding Request</b>	Unknown

### Watershed Restoration Program > Restore Priority Meadows, Wetlands, and Lake Tahoe Tributaries

The Aquatic Organism Passage Assessment Project will identify stream crossings that are impeding upstream movement of fish from Lake Tahoe into tributaries. The assessment will identify the first passage barrier in streams entering Lake Tahoe beginning at the mouth and moving upstream. The project will identify which streams could be occupied by Lahontan cutthroat trout and the length of habitat currently available, crossing that are impacting hydrologic processes including, and crossings that are contributing to increased sediment transport.

*No Key Photo provided for this Project*

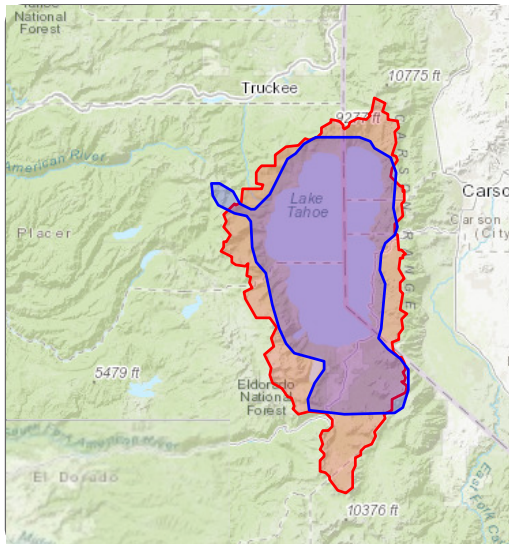
#### Targeted Performance Measures

*No Expected Accomplishments provided*

#### Threshold Categories

- Fisheries
- Wildlife

#### Location



#### Targeted Funding

■ No Funding Source Identified

## Photos

*No additional photos provided*

---

Project Fact Sheet Data as of 02/15/2026