



South Zephyr Creek SEZ Crossing and Restoration Project

Project Number	01.02.01.0111		
Action Priority	Restore Priority Meadows, Wetlands, and Lake Tahoe Tributaries		
Implementers	Nevada Tahoe Conservation District		
Supporting Agencies			
Primary Contact	Meghan Kelly (mkelly@ntcd.org)		
Stage	Planning/Design	Duration	2025 - 2027
Total Project Cost	\$1,400,000	Funding Request	\$1,400,000

Watershed Restoration Program > Restore Priority Meadows, Wetlands, and Lake Tahoe Tributaries

The South Zephyr Creek SEZ Crossing and Restoration Project intends to reconnect floodplains below US-50, relocate existing stormwater assets outside of the SEZ, upsize or duplicate an existing culvert below US-50, and upsize an existing culvert on the USFS/Zephyr Cove Resort property. A resident beaver population utilizes an NDOT box culvert to dam the creek resulting in upstream flooding of the Zephyr Cove campground trails, US-50, and a nearby sewer pump station. NTCDC will work with the USFS, NDOT and the Zephyr Cove Resort to design and implement the project.



beaver dam within 4ft wide NDOT HWY50 culvert, November 2024

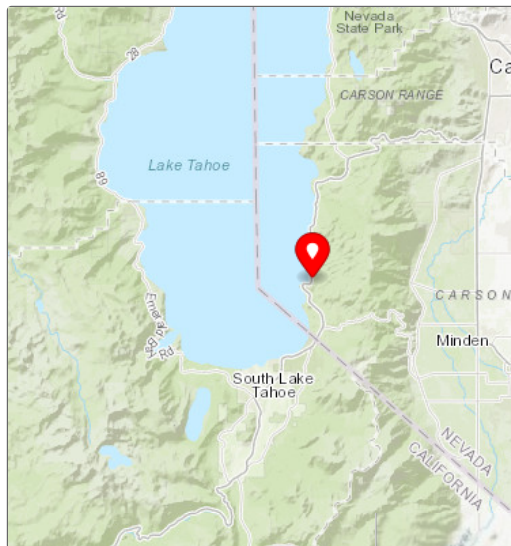
Targeted Performance Measures

- Acres of SEZ Restored or Enhanced

Threshold Categories

- Water Quality

Location

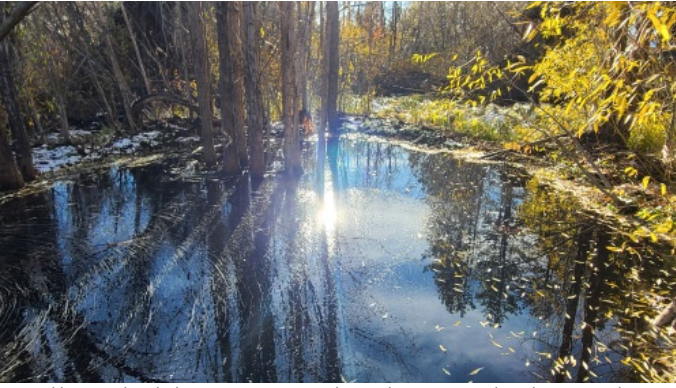


Targeted Funding

Targeted Funding: Lake Tahoe Restoratio... (USFS - LTBMU), \$1,050,000
Targeted Funding: Nevada Department of Transpor... (NDOT), \$350,000

Photos

Before



second beaver dam below NDOT HWY50 culvert where SEZ needs to be restored, November 2024



Urban uplands to reconnect and utilize as floodplain. Photo from April 2024 when beaver dam was breached and Zephyr Cove Resort was flooded.



Undersized culvert on Zephyr Cove Resort property creates road flooding, November 2024



Zephyr Cove Campground Trail flooded due to beaver dam in NDOT HWY50 culvert, November 2024