



Terrace View Sewer Line Burke Headwaters Restoration

Project Number	01.02.01.0109		
Action Priority	Restore Priority Meadows, Wetlands, and Lake Tahoe Tributaries		
Implementers	Nevada Tahoe Conservation District		
Supporting Agencies	Nevada Tahoe Conservation District		
Primary Contact	Meghan Kelly (mkelly@ntcd.org)		
Stage	Planning/Design	Duration	2024 - 2025
Total Project Cost	\$750,000	Funding Request	\$750,000

Watershed Restoration Program ➤ Restore Priority Meadows, Wetlands, and Lake Tahoe Tributaries

Between Terrace View and N. Benjamin Road, there is an export sewer line under a branch of Burke Creek that will be relocated out of the stream zone as part of its life span replacement. This project proposes to restore the SEZ that has been impaired by the dirt sewer line access road and trails.



road in SEZ to access sewerline

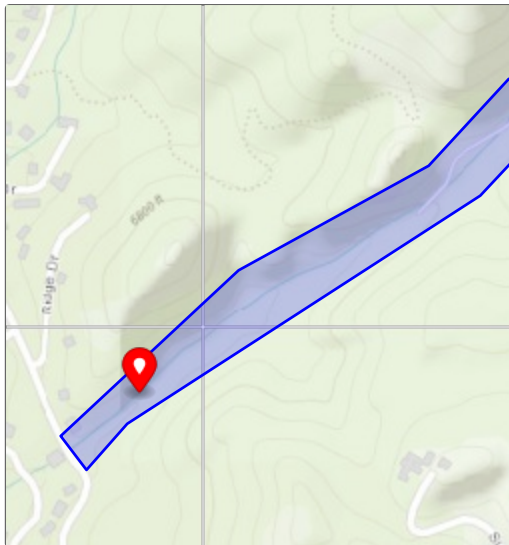
Targeted Performance Measures

- Acres of SEZ Restored or Enhanced

Threshold Categories

- Fisheries
- Soil Conservation
- Vegetation Preservation
- Water Quality

Location



Targeted Funding

- Secured Funding: Nevada Tahoe Conservancy (NTCD), \$1,000
- Targeted Funding: Lake Tahoe Restoratio... (USFS - LTBMU), \$750,000

Photos

No additional photos provided

Project Fact Sheet Data as of 06/06/2025