



Ski Run "Mountain to Marina" Green Infrastructure Planning

Project Number	01.01.01.0192		
Action Priority	Reduce Stormwater Pollution From: Roads and Highways, Forest Roads, Public and Private Parcels		
Implementers	Tahoe Regional Planning Agency		
Supporting Agencies	U.S. Forest Service - Lake Tahoe Basin Management Unit		
Primary Contact	Shay Navarro (snavarro@trpa.gov)		
Stage	Planning/Design	Duration	2020 - 2025
Total Project Cost	\$471,000	Funding Request	\$78,500

Stormwater Management Program ➤ Reduce Stormwater Pollution From: Roads and Highways, Forest Roads, Public and Private Parcels

A green infrastructure approach to stormwater management protects, restores, and mimics the natural water cycle. The project involves planning, analysis, outreach, and technical assistance within the greater Ski Run/ Bijou Park Creek watershed to reduce stormwater pollution from developed parcels and roadways collectively. The project identifies opportunities and constraints for regional treatment, public/private partnerships and green infrastructure solutions that achieve multiple benefits. Work with the community and stakeholders will produce by-in for recommended strategies.

No Key Photo provided for this Project

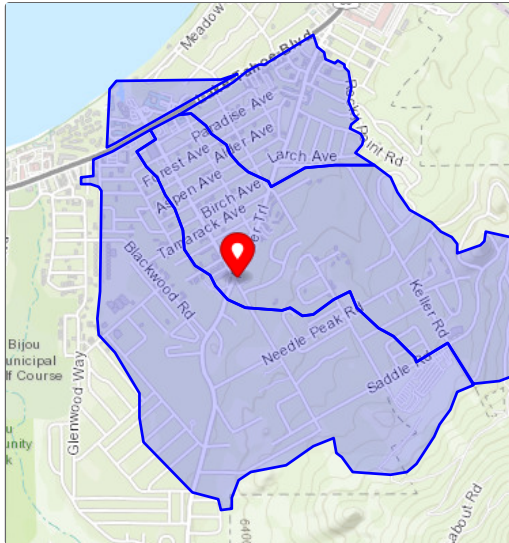
Targeted Performance Measures

No Expected Accomplishments provided

Threshold Categories

- Recreation
- Water Quality
- Soil Conservation
- Wildlife

Location



Targeted Funding

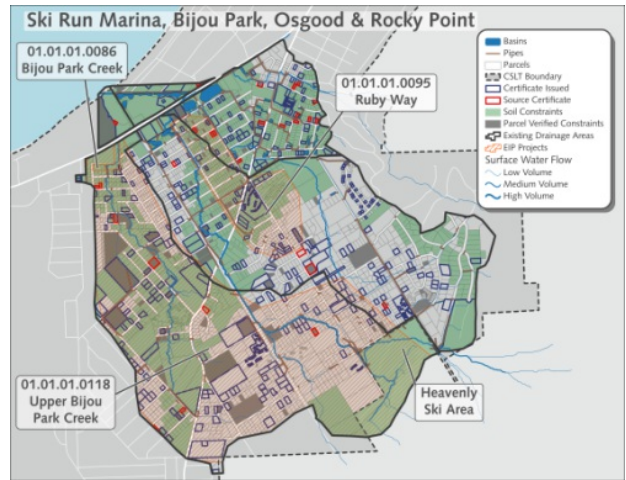
	Secured Funding: Lake Tahoe Restoratio... (USFS - LTBMU), \$392,500
	Targeted Funding: Private Property Owners (Private), \$78,500

Photos

Before



Green storm water infrastructure planning aims to improve capacity of existing storm water basin



Existing Conditions Map



Traffic circulation along Spruce Avenue during Bijou Community School drop off/pick up. Off pavement parking and no sidewalk or safe route to school for bicycles and pedestrians.



Groundwater intercepted and pumped at Heavenly California Base Lodge parking lot



Opportunity to expand Osgood basin



Ground water surfaces at Heavenly Cal Base Lodge parking lot in the upper watershed.