



## Christmas Valley Erosion Control Project - Phase 2C

<b>Project Number</b>	01.01.01.0053
<b>Action Priority</b>	Reduce Stormwater Pollution From: Roads and Highways, Forest Roads, Public and Private Parcels
<b>Implementers</b>	El Dorado County, CA
<b>Supporting Agencies</b>	Unknown or unspecified
<b>Primary Contact</b>	Donaldo Palaroan (donaldo.palaroan@edcgov.us)

<b>Stage</b>	Completed	<b>Duration</b>	2005 - 2013
<b>Total Project Cost</b>	\$1,018,141	<b>Funding Request</b>	\$0

### Stormwater Management Program ➤ Reduce Stormwater Pollution From: Roads and Highways, Forest Roads, Public and Private Parcels

The Christmas Valley Erosion Control Project - Phase 2C encompasses the streets of Santa Claus Drive, Saint Nick Way, the southernmost end of Blitzen Road, and Elf Lane (includes Christmas Valley Unit Nos. 1 and 2). The main goals of the Project are related to improving the water quality of runoff to Lake Tahoe by reducing erosion and sediment flow originating in the Project area. The Project goals are remove/reduce fine sediment originating from the Project areas prior to reaching the Upper Truckee River to the maximum extent practicable. Remove/reduce coarse sediment originating from the Project areas prior to reaching the Upper Truckee River to the maximum extent practicable.

#### Targeted Performance Measures

*No Expected Accomplishments provided*

#### Threshold Categories

- Water Quality

Christmas Valley Phase 2C Erosion Control Project  
Photo Monitoring Report

Photo Point #29



Pre-Construction  
July 2012  
St Nick Way culvert outlet channel

Post-Construction  
May 2013  
Constructed armored channel, stabilized slopes with natural soil amendment, stabilized with composted mulch cover.

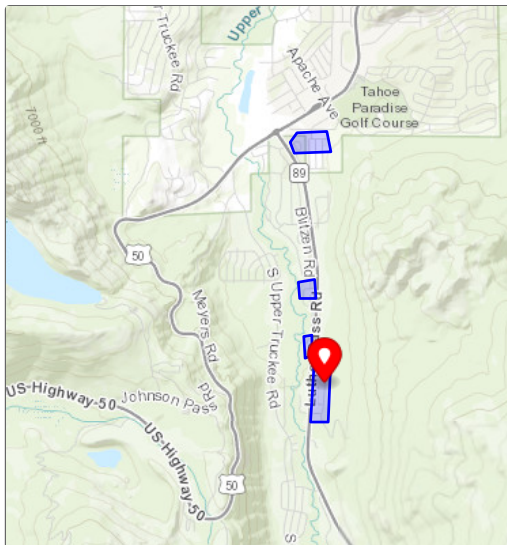


Post-Construction  
May 2014

Post-Construction  
October 2014

See photos for captions.

#### Location



#### Targeted Funding

■ Secured Funding: Unknown or Unassigned, \$1,018,141

## Photos

*No additional photos provided*

---

Project Fact Sheet Data as of 05/18/2024